

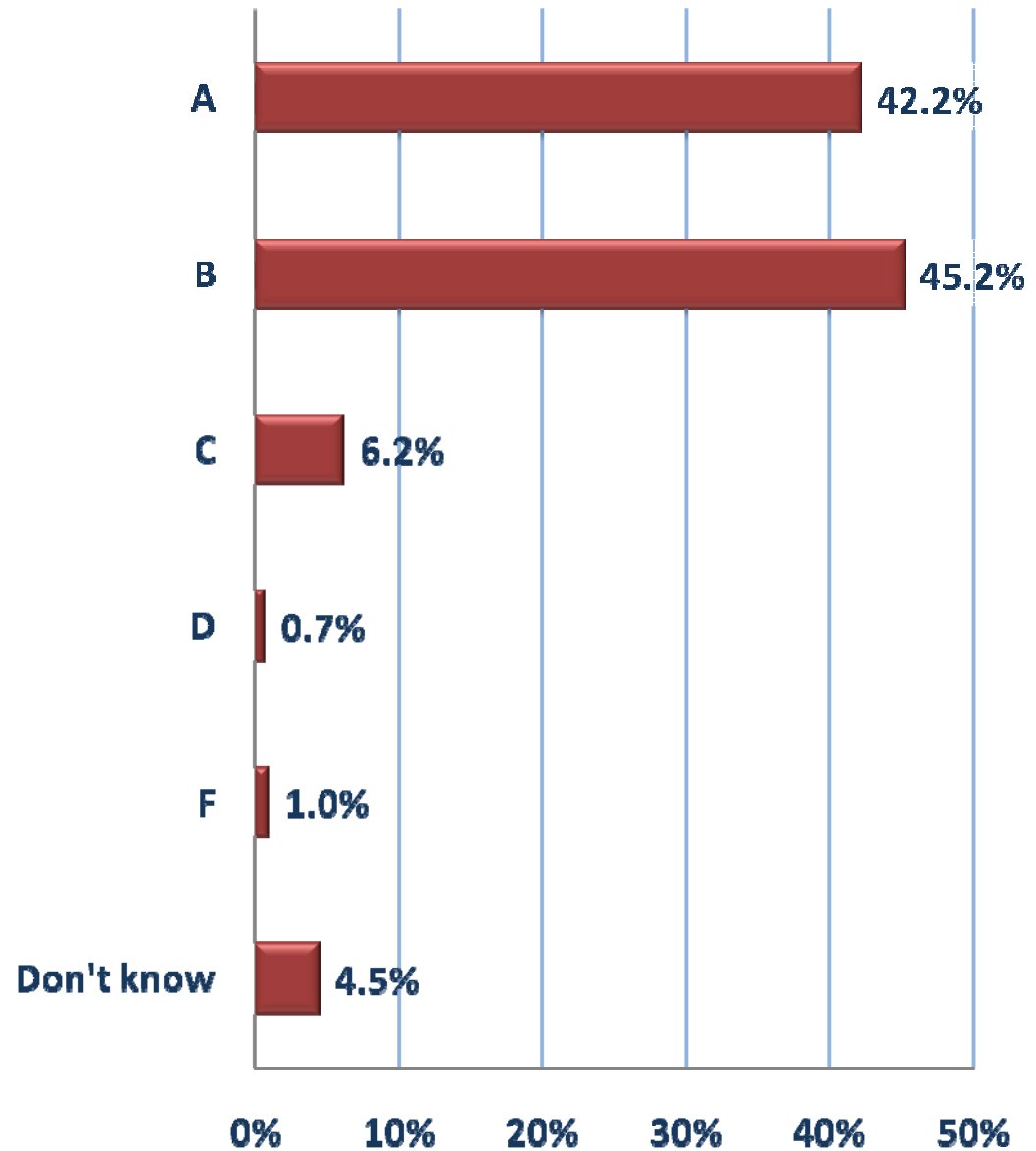
Survey Basics

- This survey involved 403 completed telephone interviews with registered voters in the Indian Prairie School District.
 - Registered voters were interviewed to allow the results of this survey to be directly compared to the results of a voter survey completed for the district in 2005.
- All interviews were completed between November 30 and December 13, 2009.
 - During the interviewing process the following factors were monitored to make sure the demography of the population interviewed matched the demography of the voting population of the district: gender, age, parent status, vote history and ZIP code.
- The overall margin of error for the results of this survey is +/- 4.5%.

Grade the District

“Students are often given the grades of A, B, C, D, and F to denote the quality of their work. Suppose the public schools in your community were graded in the same way.

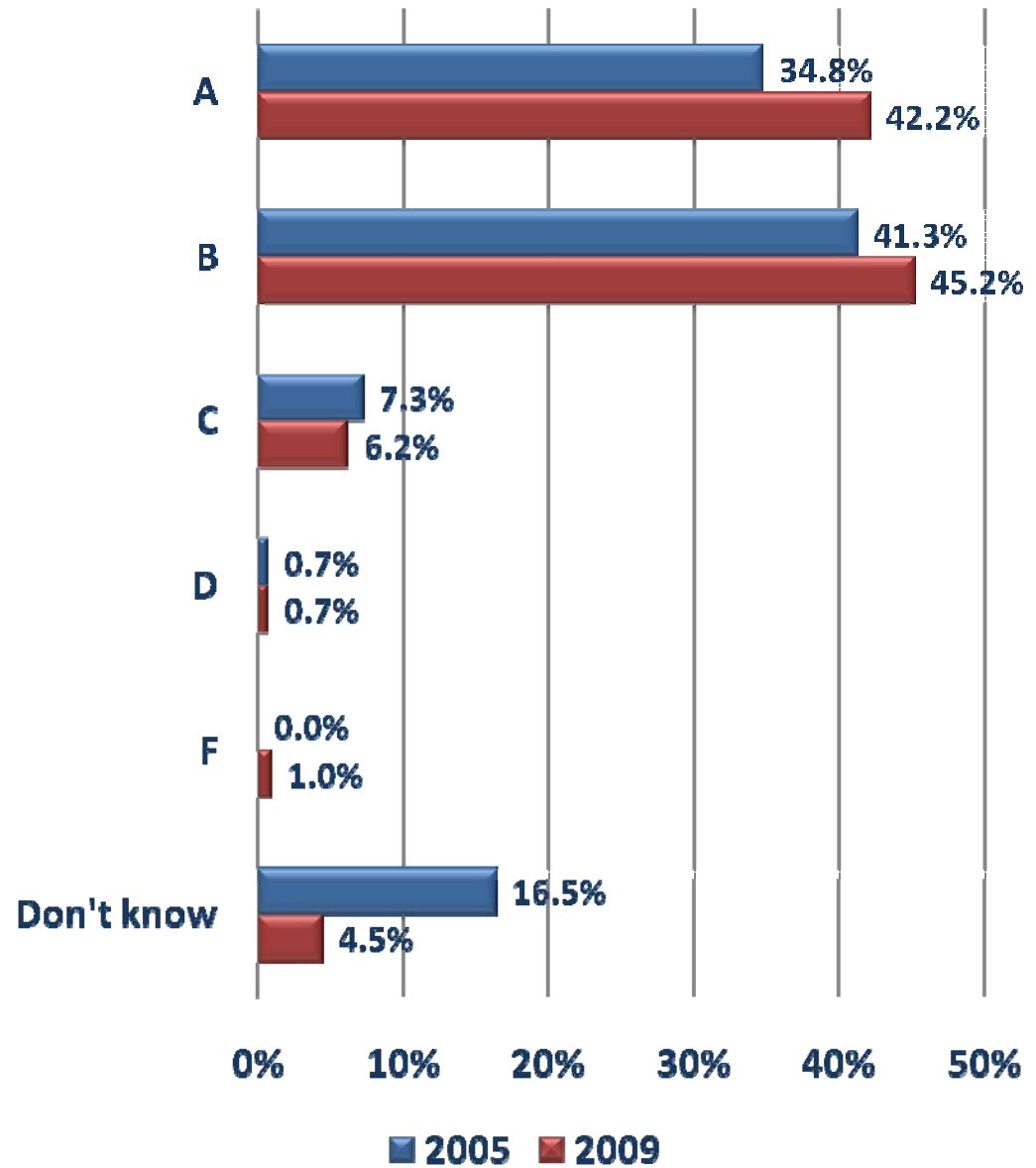
“What grade would you give the public schools in the Indian Prairie School District?”



Grade the District

Better grades than voters gave the district in 2005.

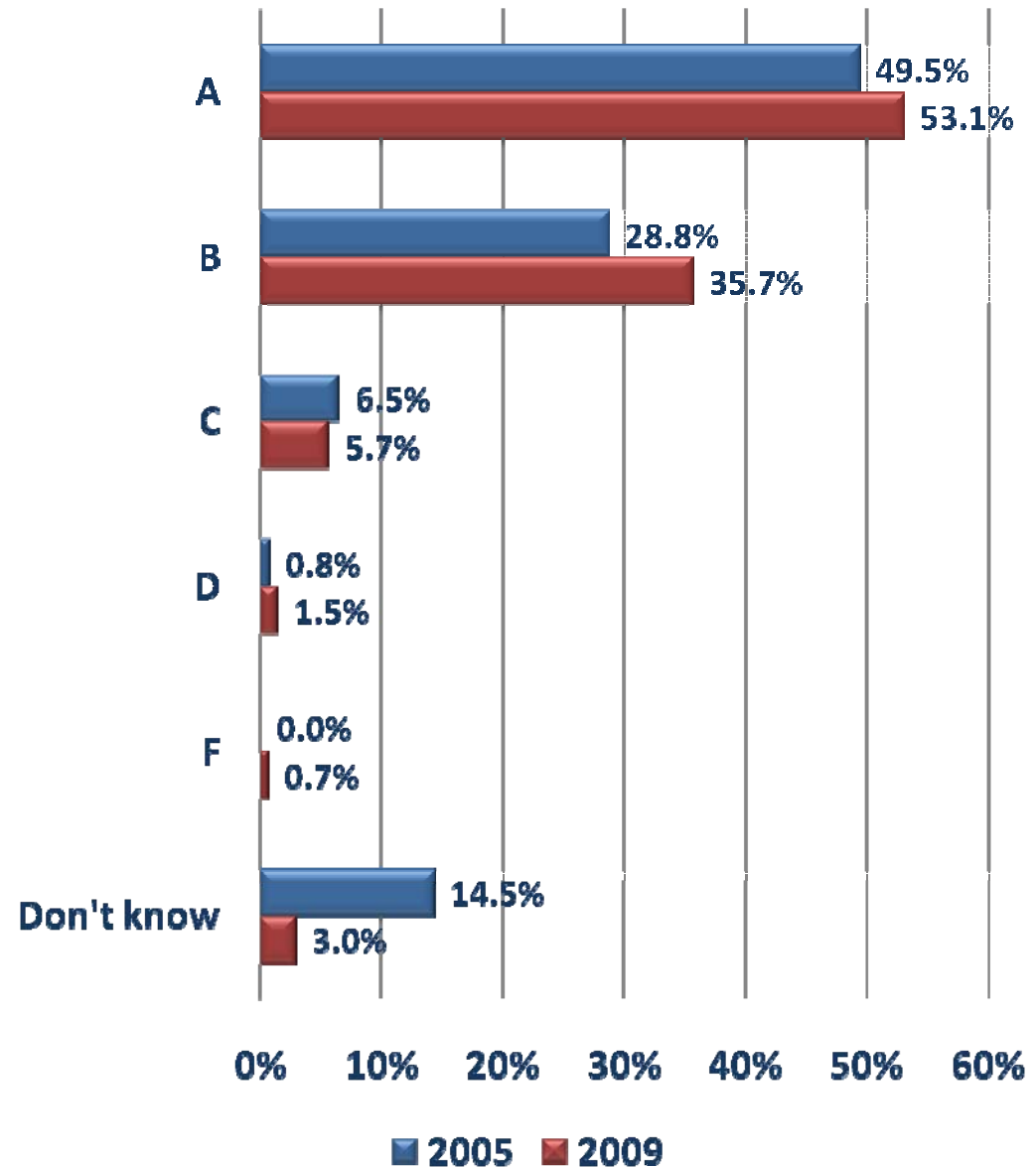
“What grade would you give the public schools in the Indian Prairie School District?”



Grade facilities

Better grades than voters gave the district in 2005.

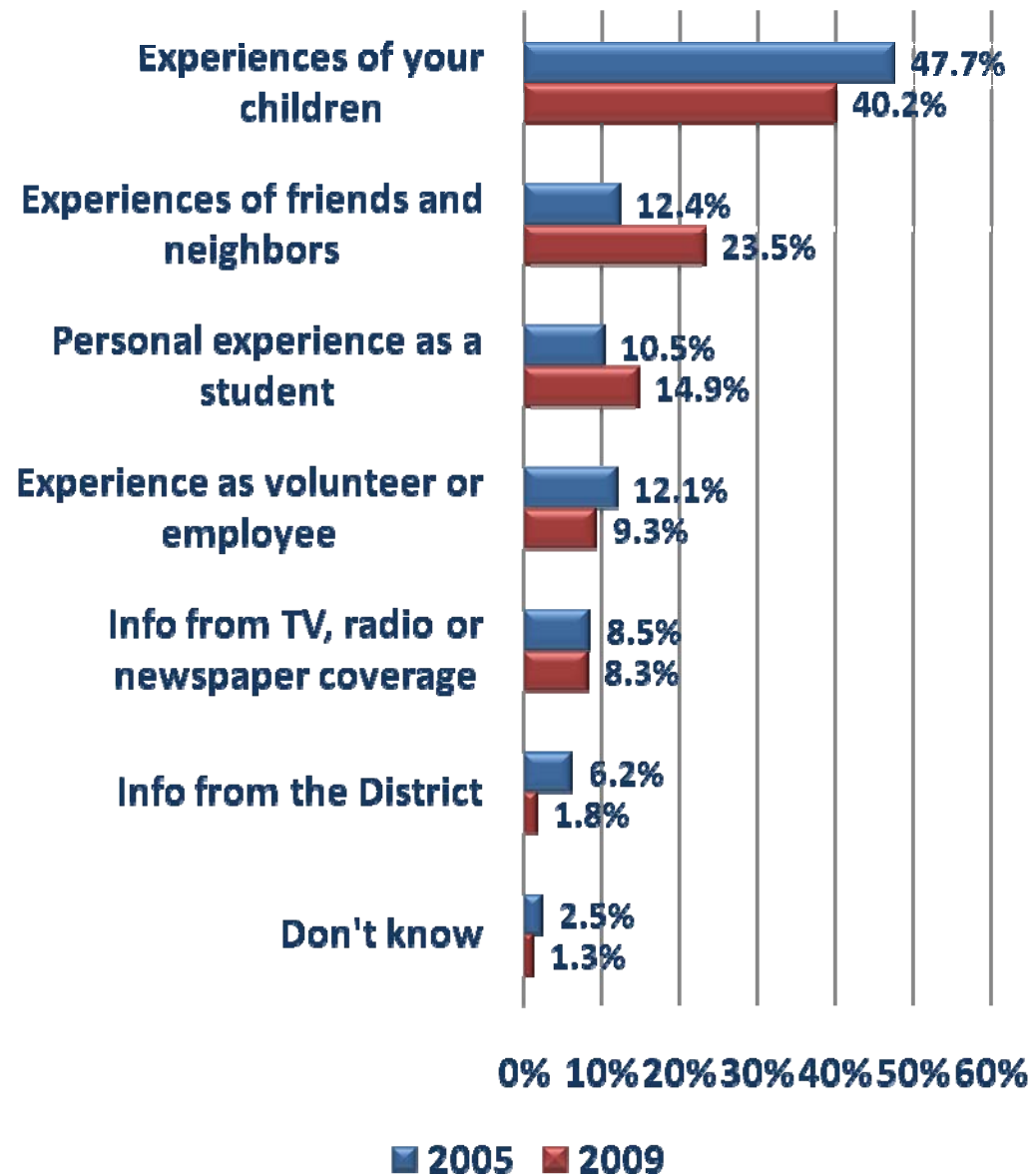
“What grade would you give to the school facilities that serve your neighborhood in the Indian Prairie School District?”



Basis for grades

“Is the grade you just gave based mainly on:

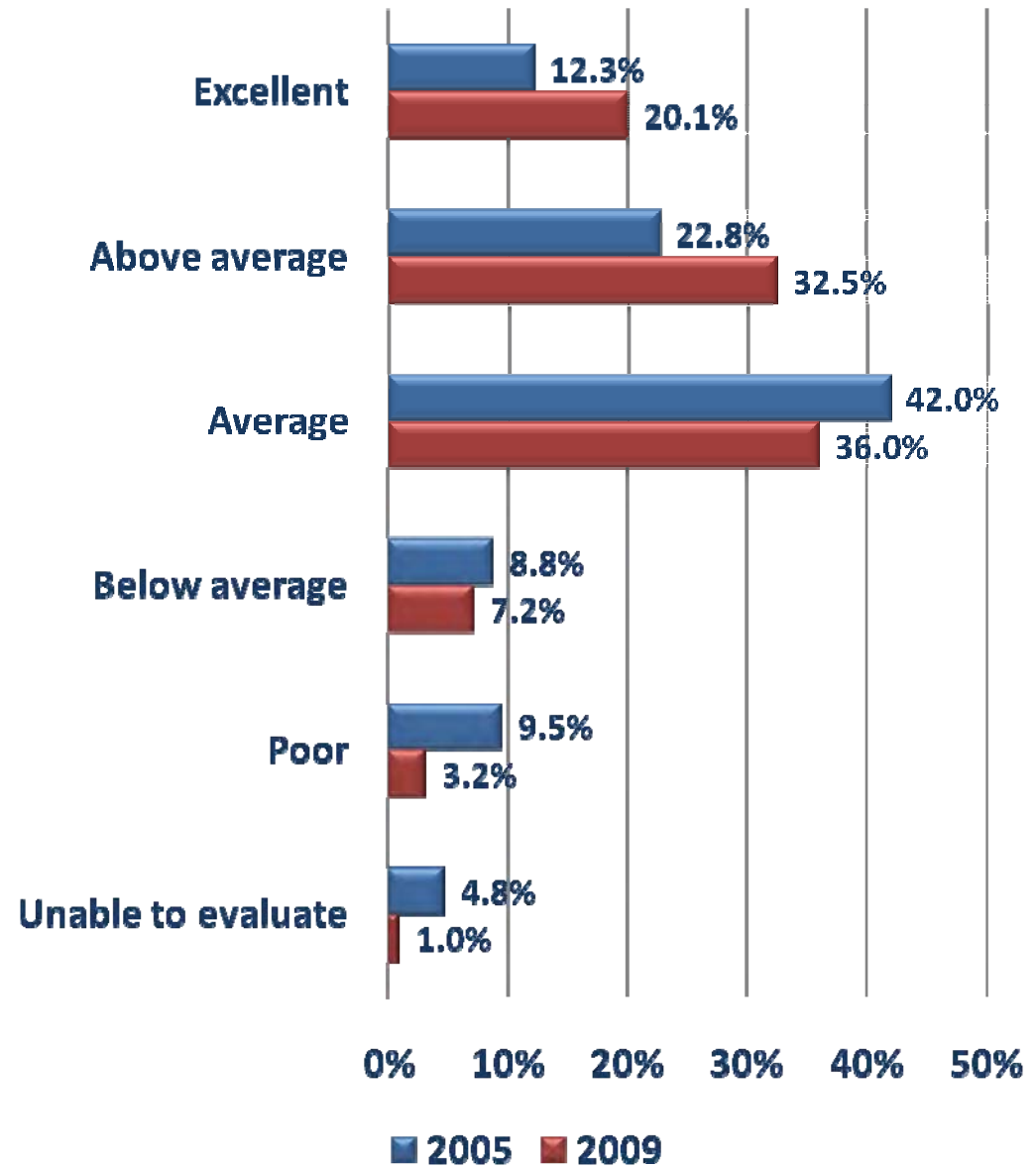
- 1.) your personal experience as a student in the public schools
- 2.) the experiences of your children
- 3.) your experience as a volunteer or employee of the school district
- 4.) the experiences of your friends and neighbors
- 5.) information you have received directly from the school district, or
- 6.) information from TV, radio, or newspaper coverage of your local schools?
District?”



Informed 2009 & 2005

“Please tell me if you believe the district has done an excellent, above average, average, below average or poor job:

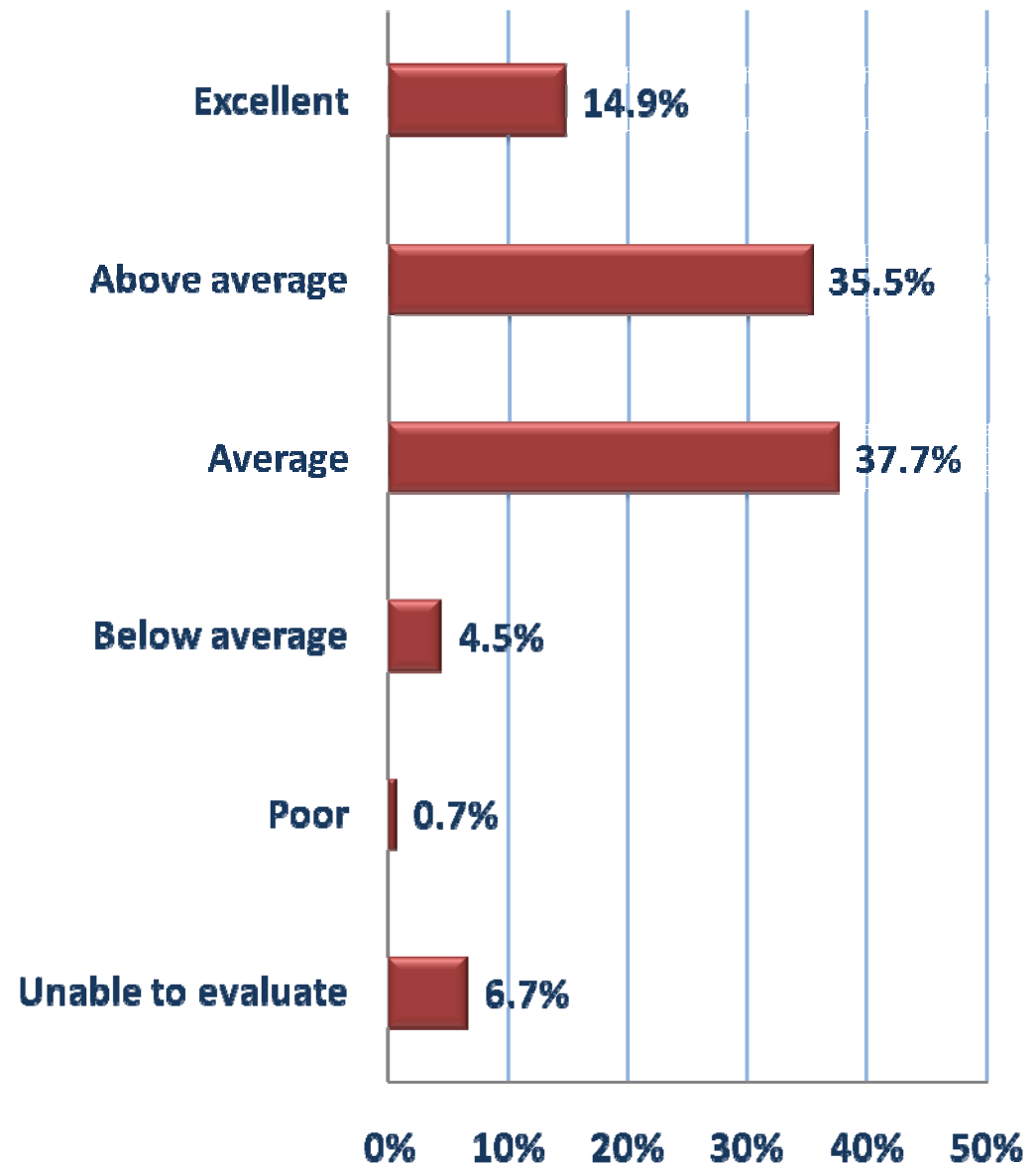
“Keeping the public informed about school district plans.”



Social and emotional needs

“Please tell me if you believe the district has done an excellent, above average, average, below average or poor job:

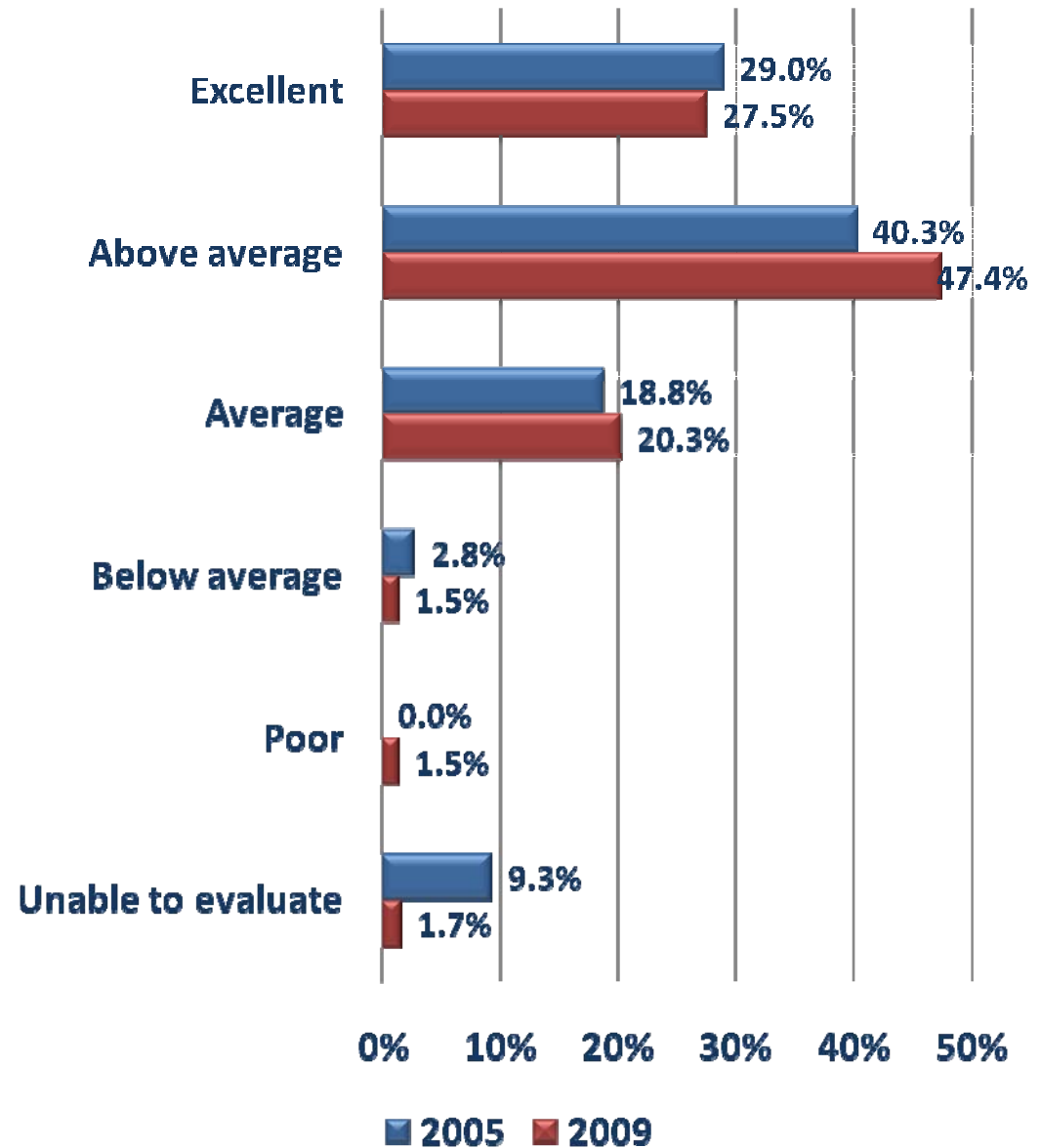
“Meeting the social and emotional needs of students.”



Educational needs

“Please tell me if you believe the district has done an excellent, above average, average, below average or poor job:

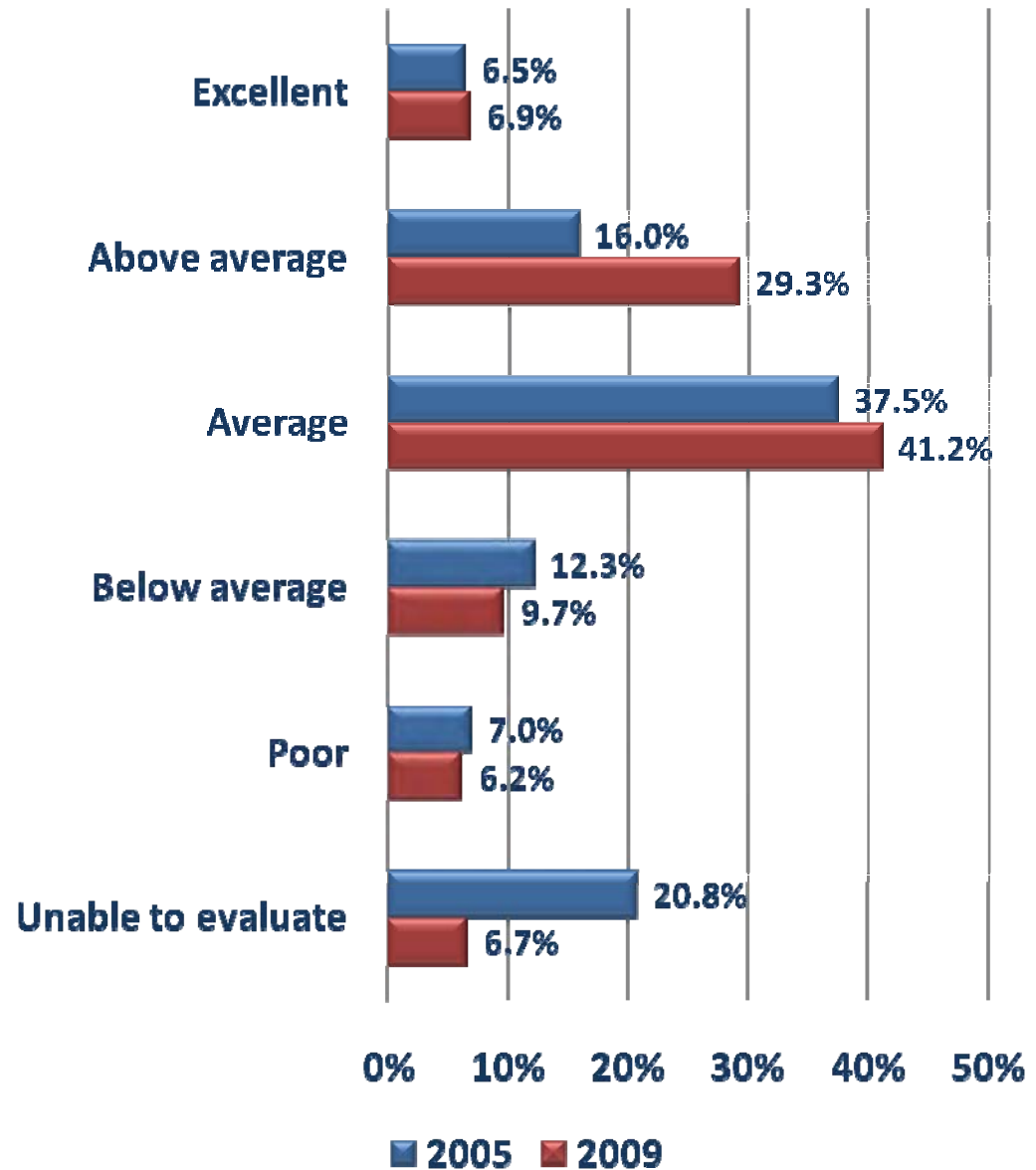
“Serving the educational needs of the students in your neighborhood.”



Financial management 2009 & 2005

“Please tell me if you believe the district has done an excellent, above average, average, below average or poor job:

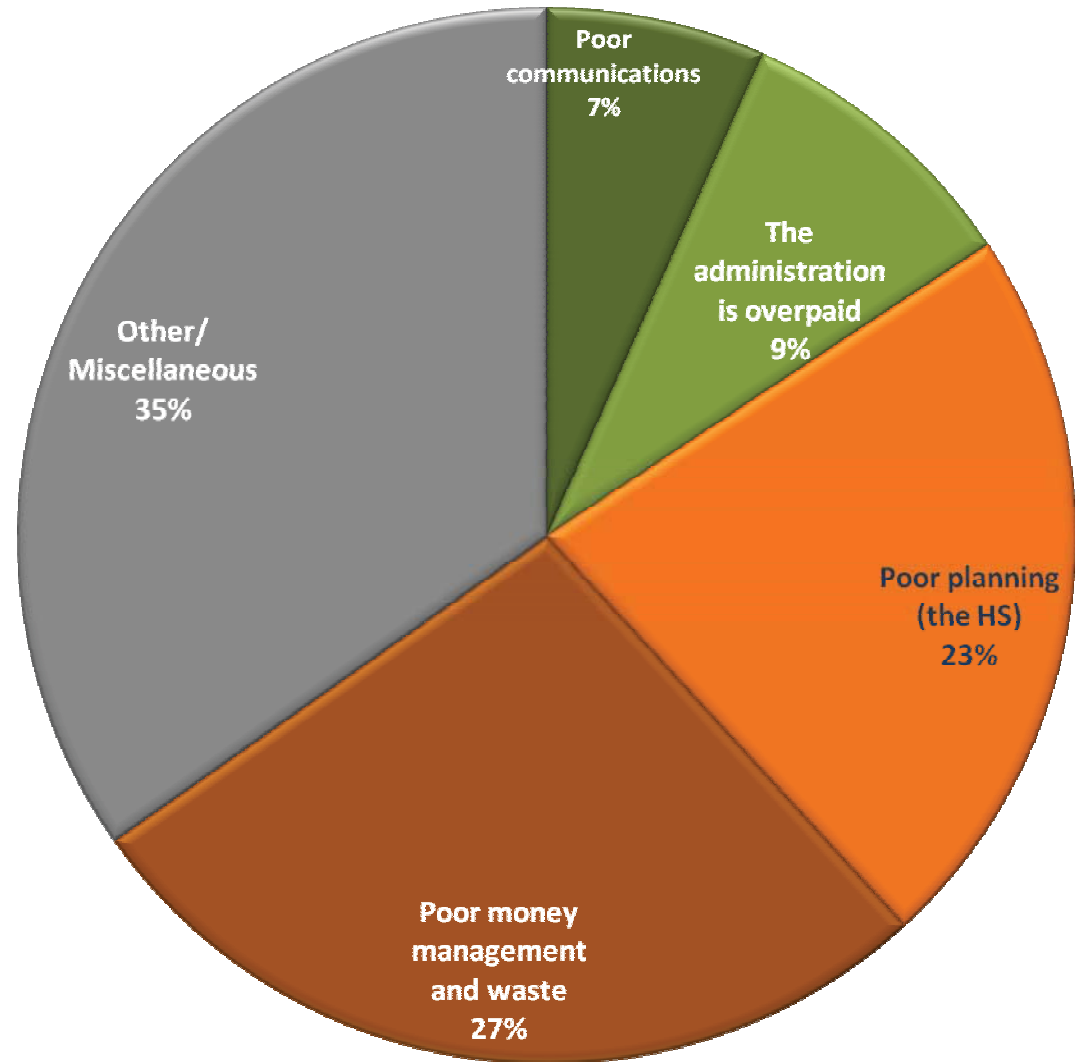
“Consider the financial management of the school district. Would you rate the financial management as excellent, above average, average, below average or poor?”



Low ratings

Those who rated any aspect of the district as Below Average or Poor were asked:

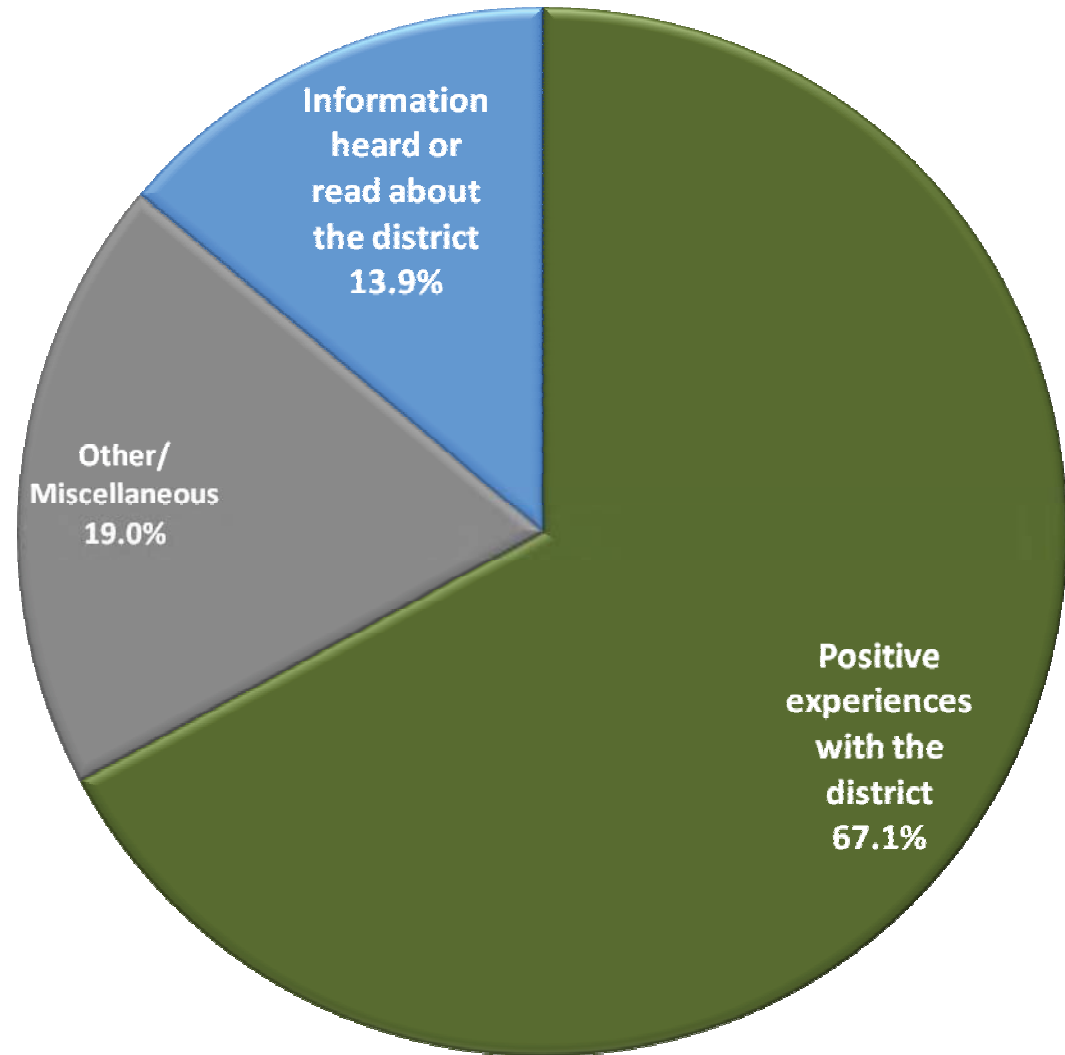
“Why have you given the district a rating of below average or poor?”



Excellent ratings

Those who rated any aspect of the district as Excellent were asked:

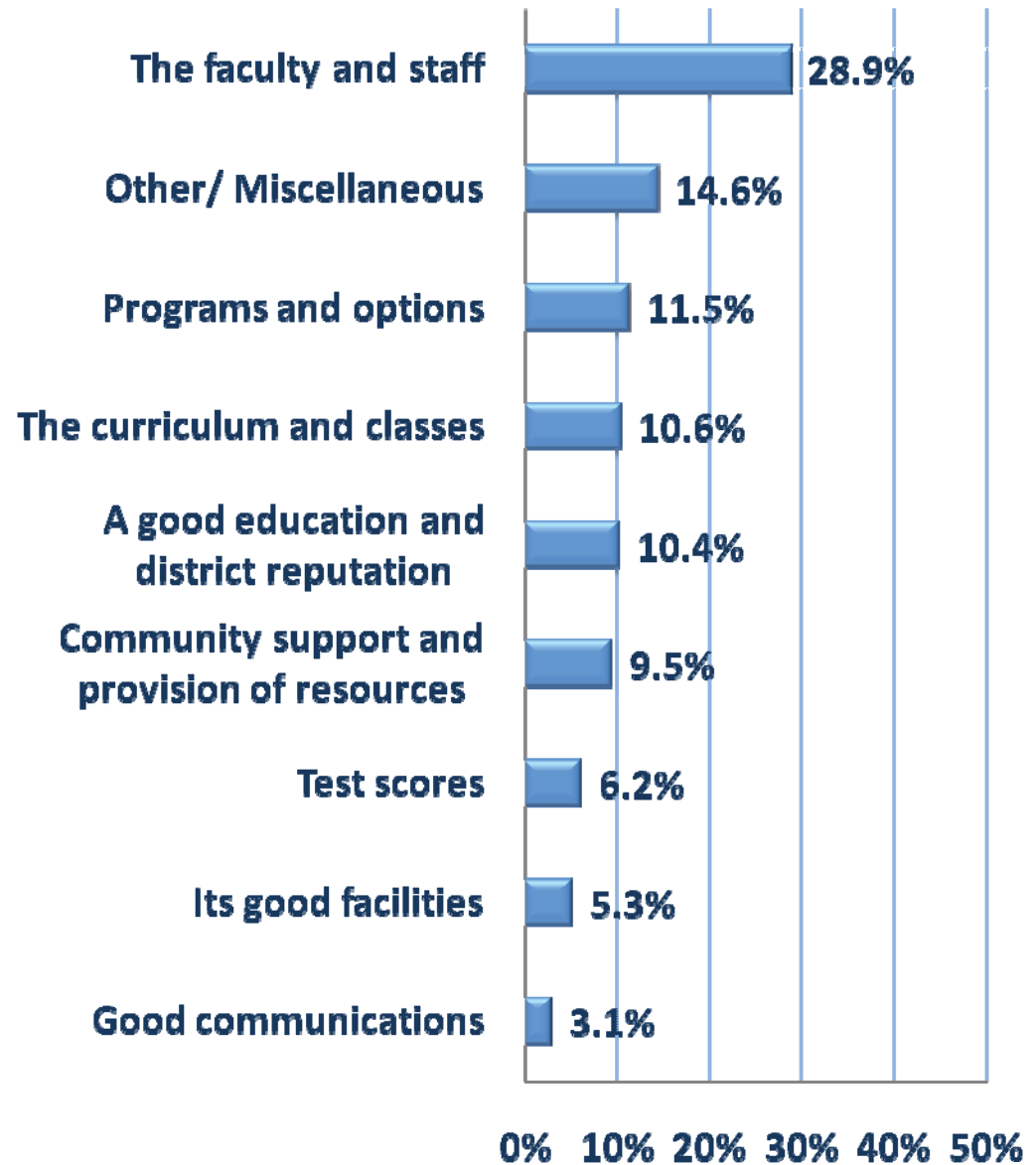
“Why have you given the district an excellent rating?”



Greatest strength

Every voter was asked the following open-ended question:

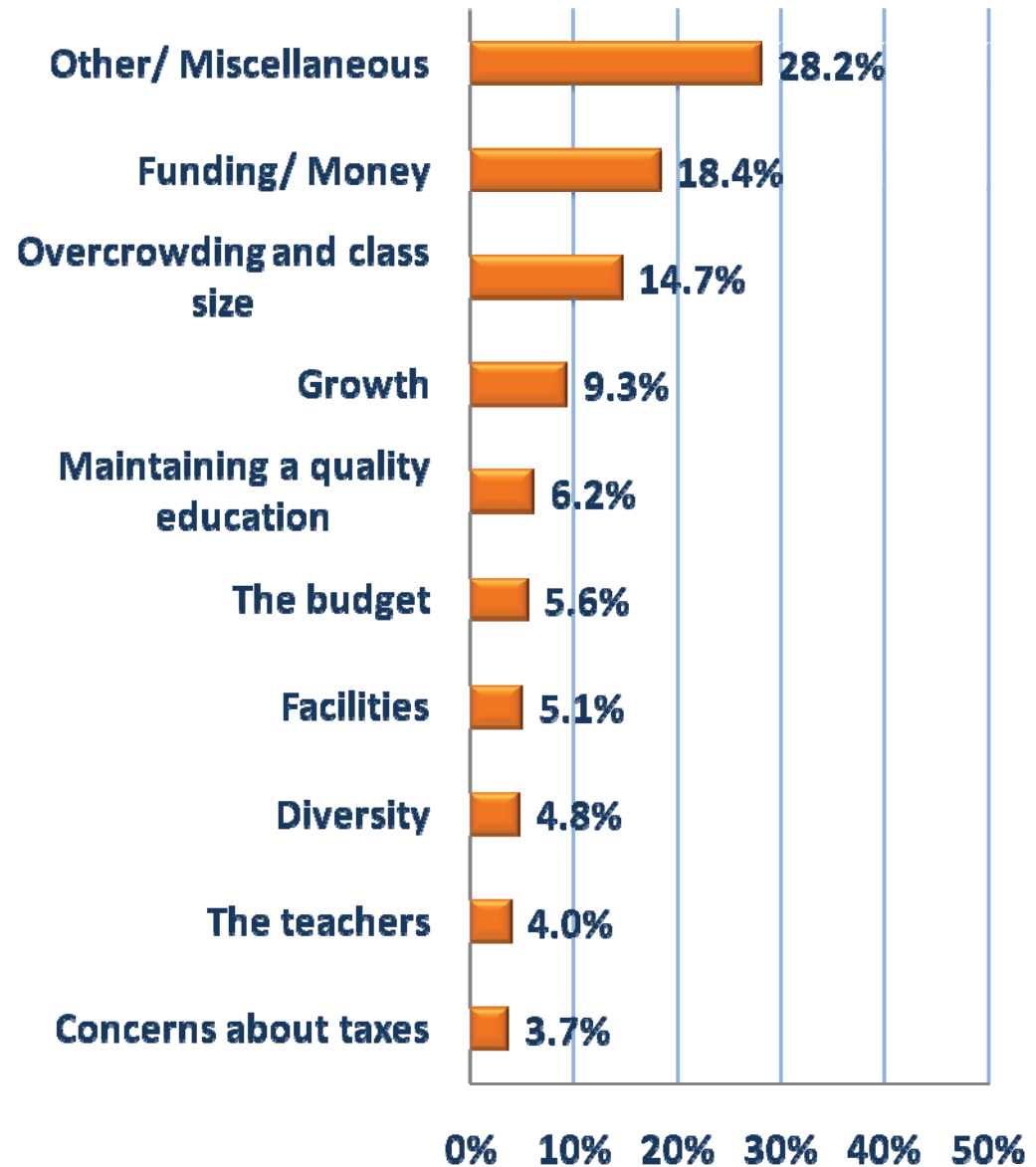
“What do you feel is the greatest strength in the Indian Prairie School District?”



Greatest challenge

Every voter was asked the following open-ended question:

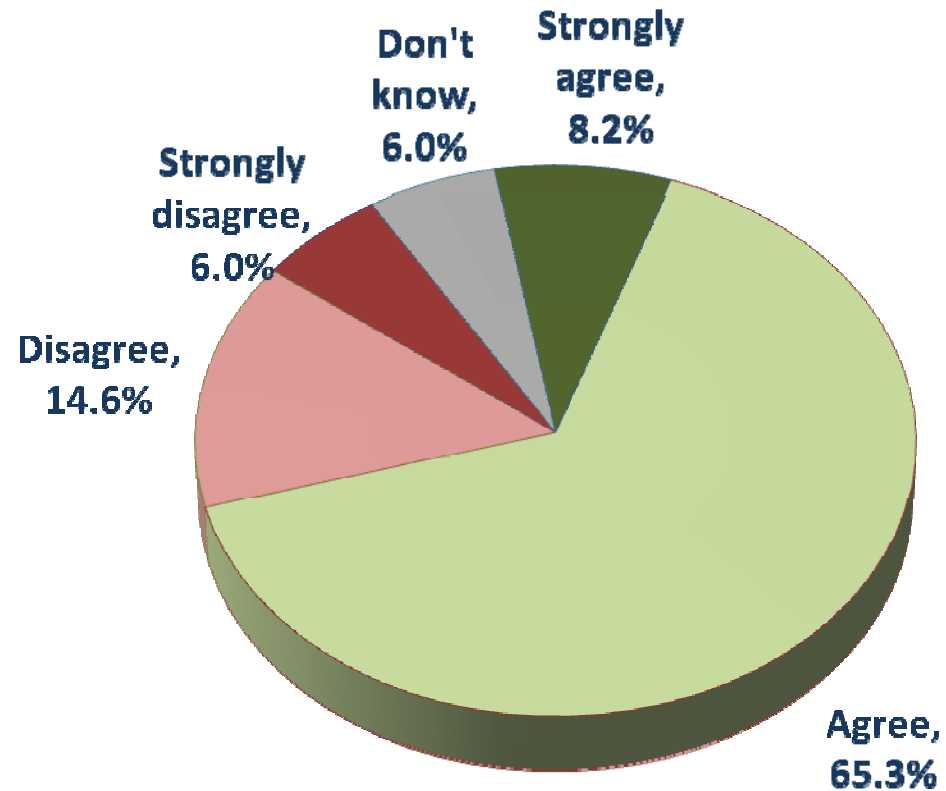
“What do you feel is the greatest challenge facing the Indian Prairie School District in the next five years?”



The School Board

“Please tell me whether you strongly agree, agree, disagree or strongly disagree with the following statement:

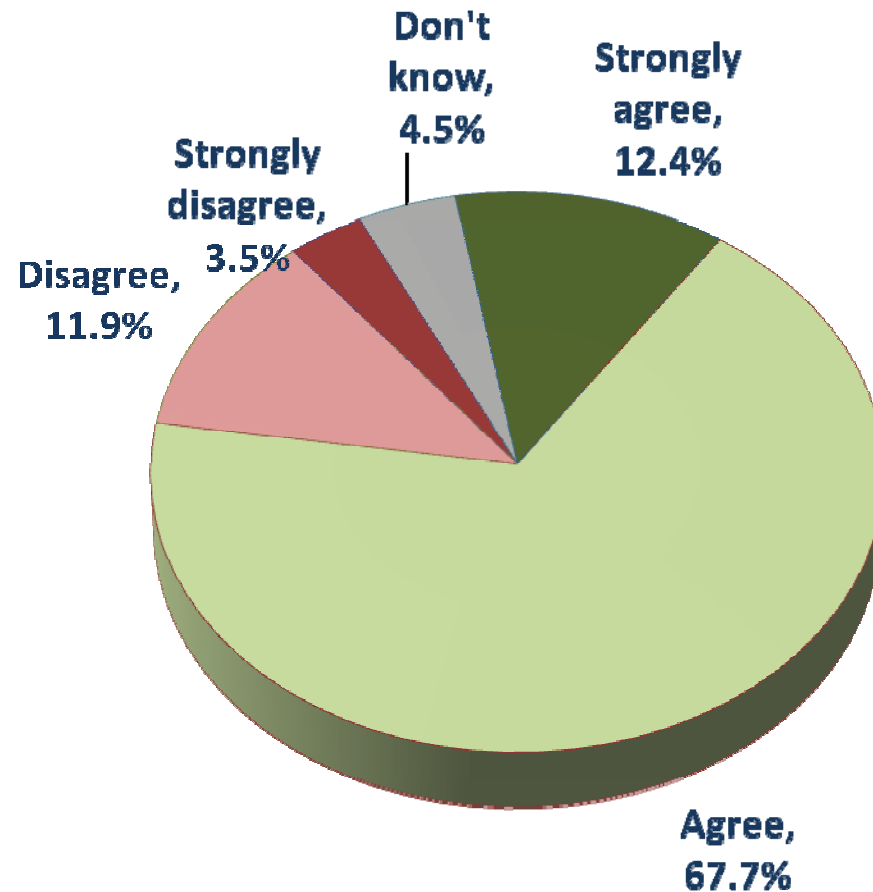
“The Indian Prairie School Board listens and responds to the community.”



The Administration

“Please tell me whether you strongly agree, agree, disagree or strongly disagree with the following statement:

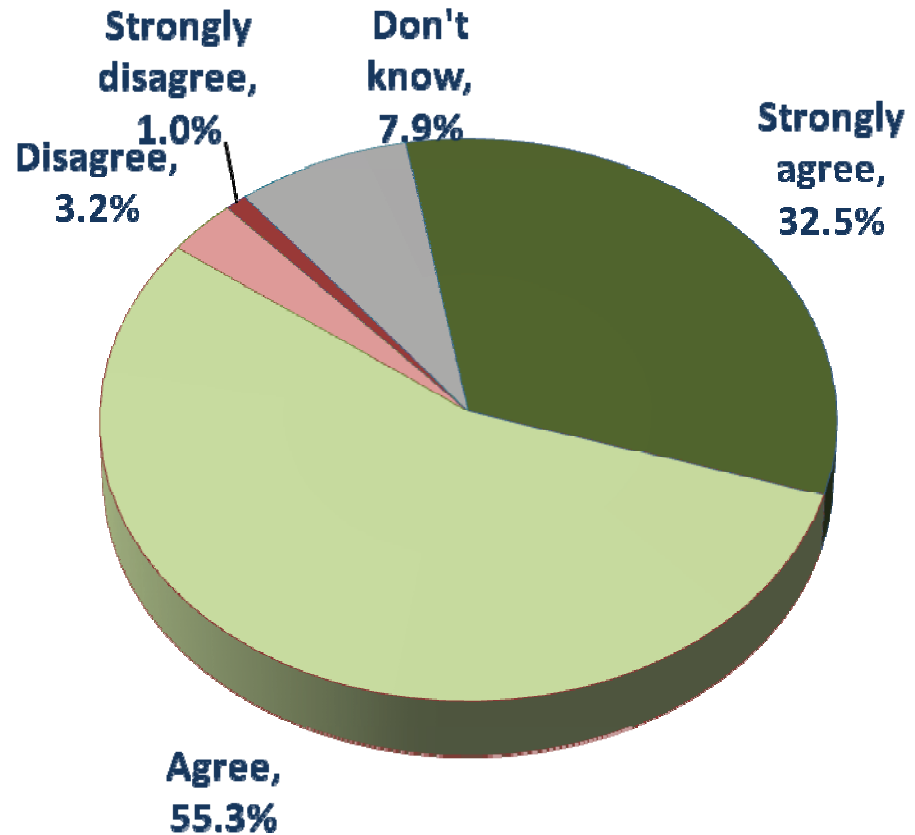
“The administrators in the Indian Prairie School District listen and respond to the community.”



The Teachers

“Please tell me whether you strongly agree, agree, disagree or strongly disagree with the following statement:

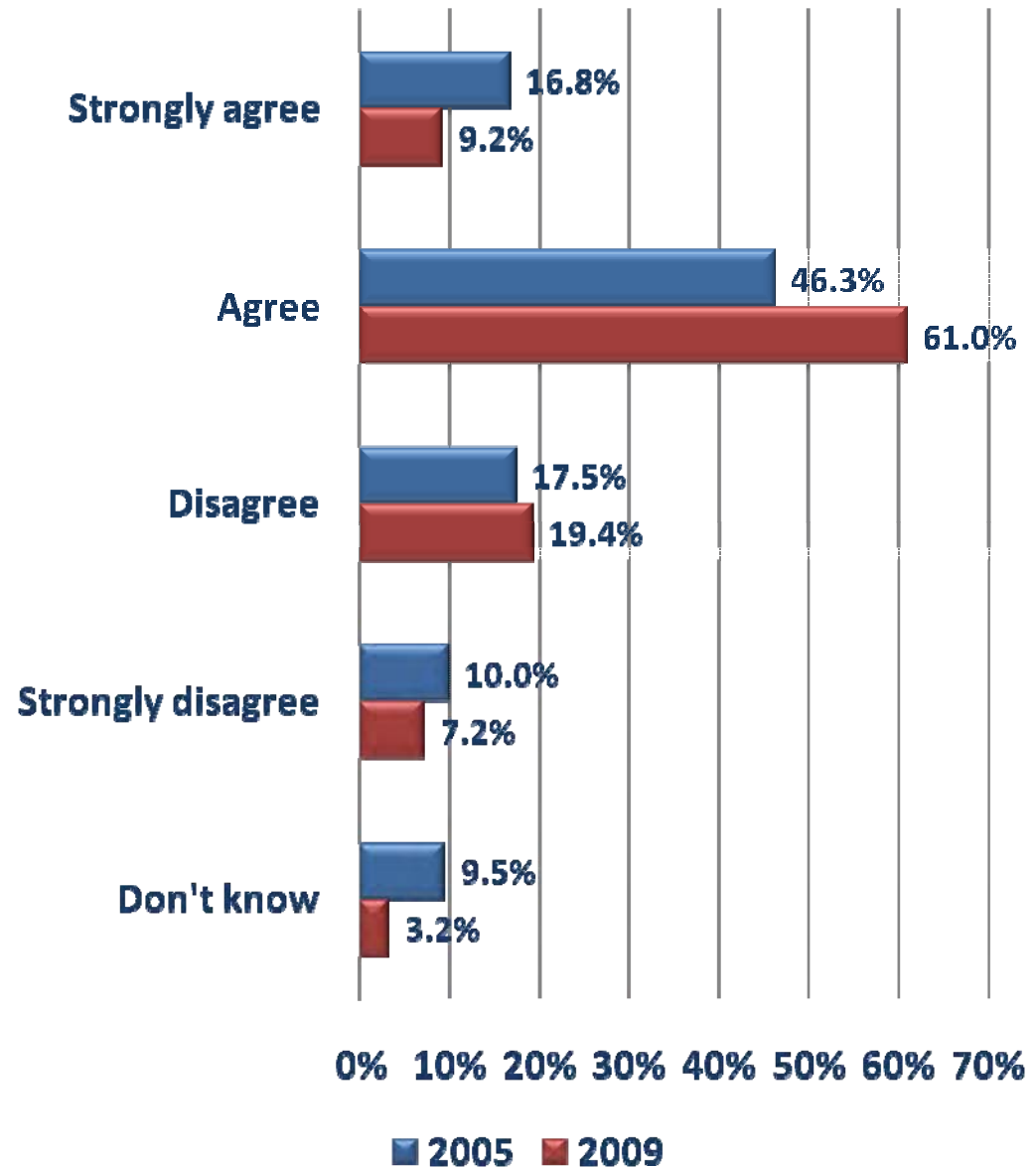
“The teachers in the Indian Prairie School District listen and respond to parents when they have questions or concerns.”



Trust

“Please tell me whether you strongly agree, agree, disagree or strongly disagree with the following statement:

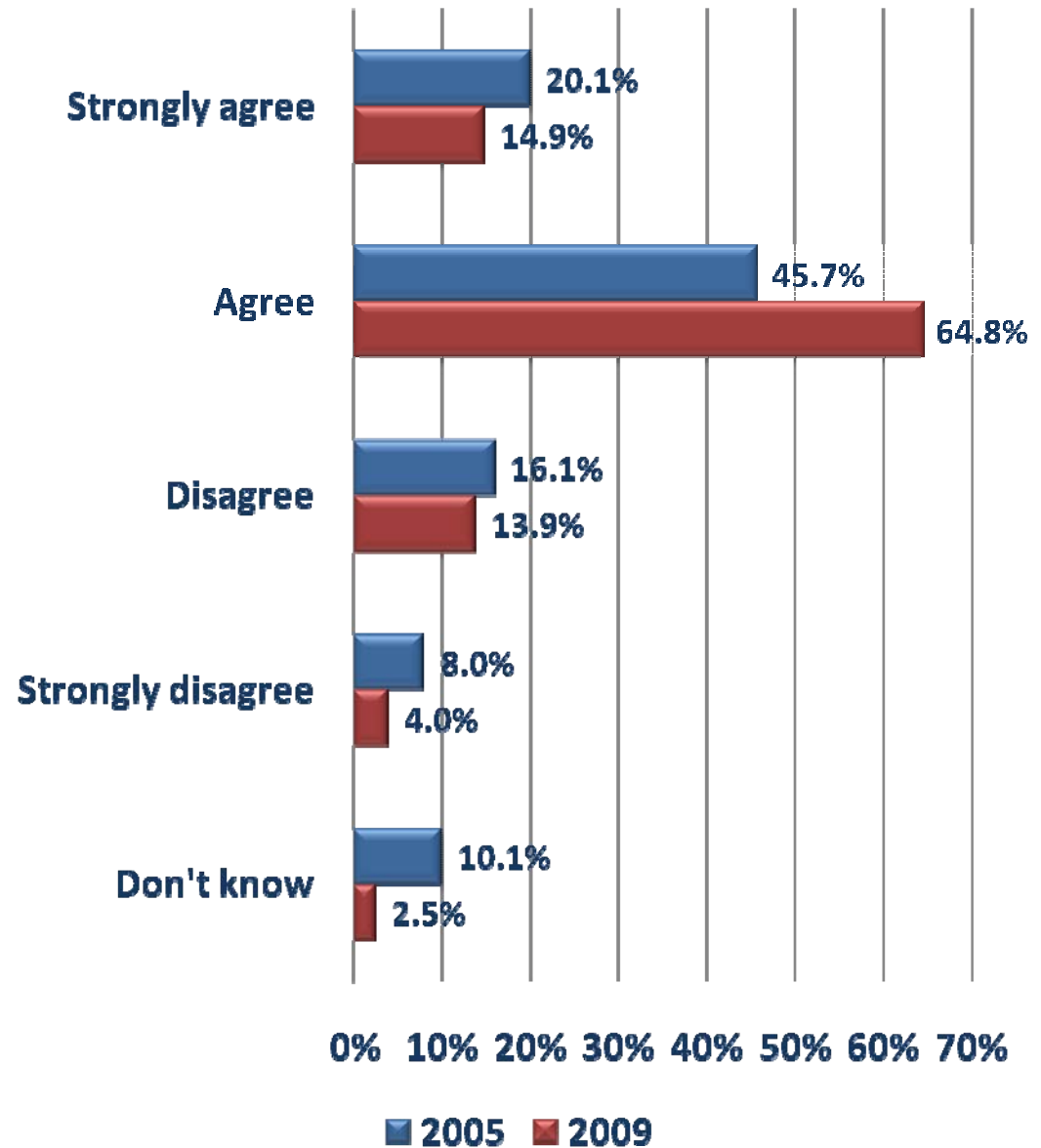
“The Indian Prairie School District can be trusted to spend local tax dollars wisely.”



Decisions

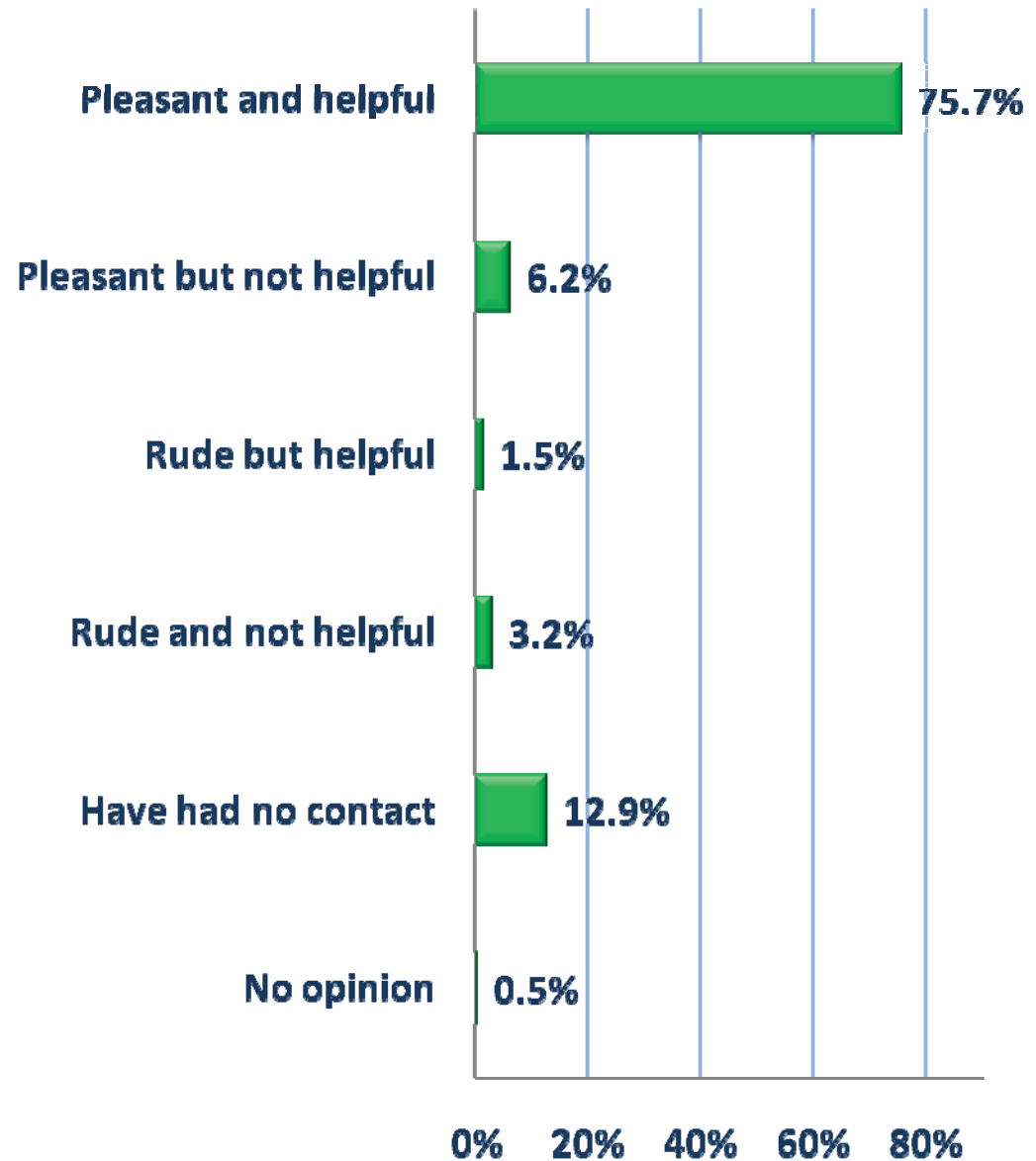
“Please tell me whether you strongly agree, agree, disagree or strongly disagree with the following statement:

“I personally have confidence in the school district’s decision making process.”



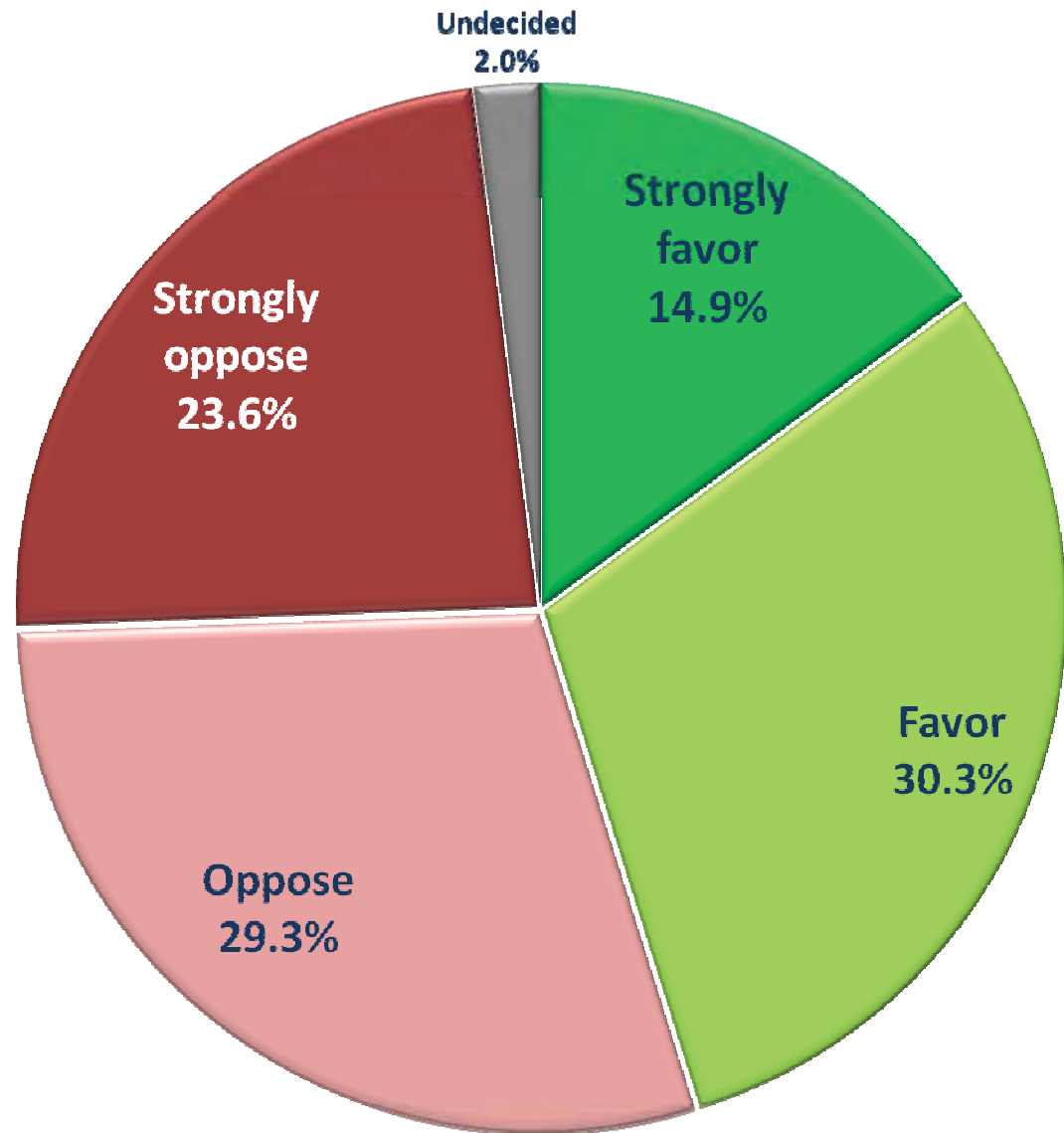
Customer service

“Think about the last contact you had with an employee of the Indian Prairie School District. Which of the following best describes your reaction to the employee’s attention to customer service:”



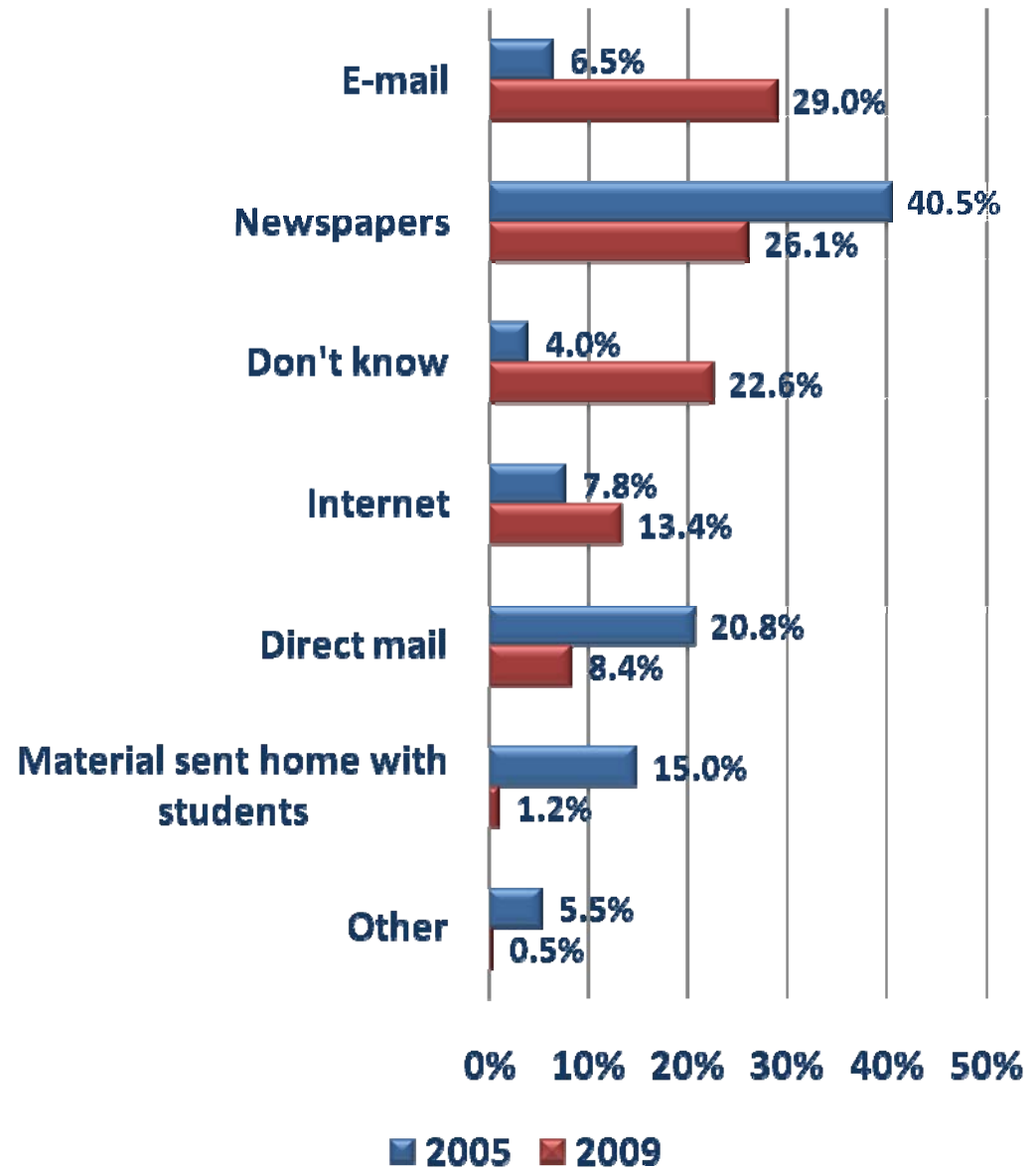
AC

“Most of the elementary schools in the district are not air conditioned. In order to air condition all the elementary schools, voters would need to approve a local property tax increase, which would cost the average homeowner in the district \$107 per year. If a proposal was placed on the ballot to raise property taxes in order to air condition all the district's elementary schools, would you strongly favor, favor, oppose or strongly oppose such a proposal?”



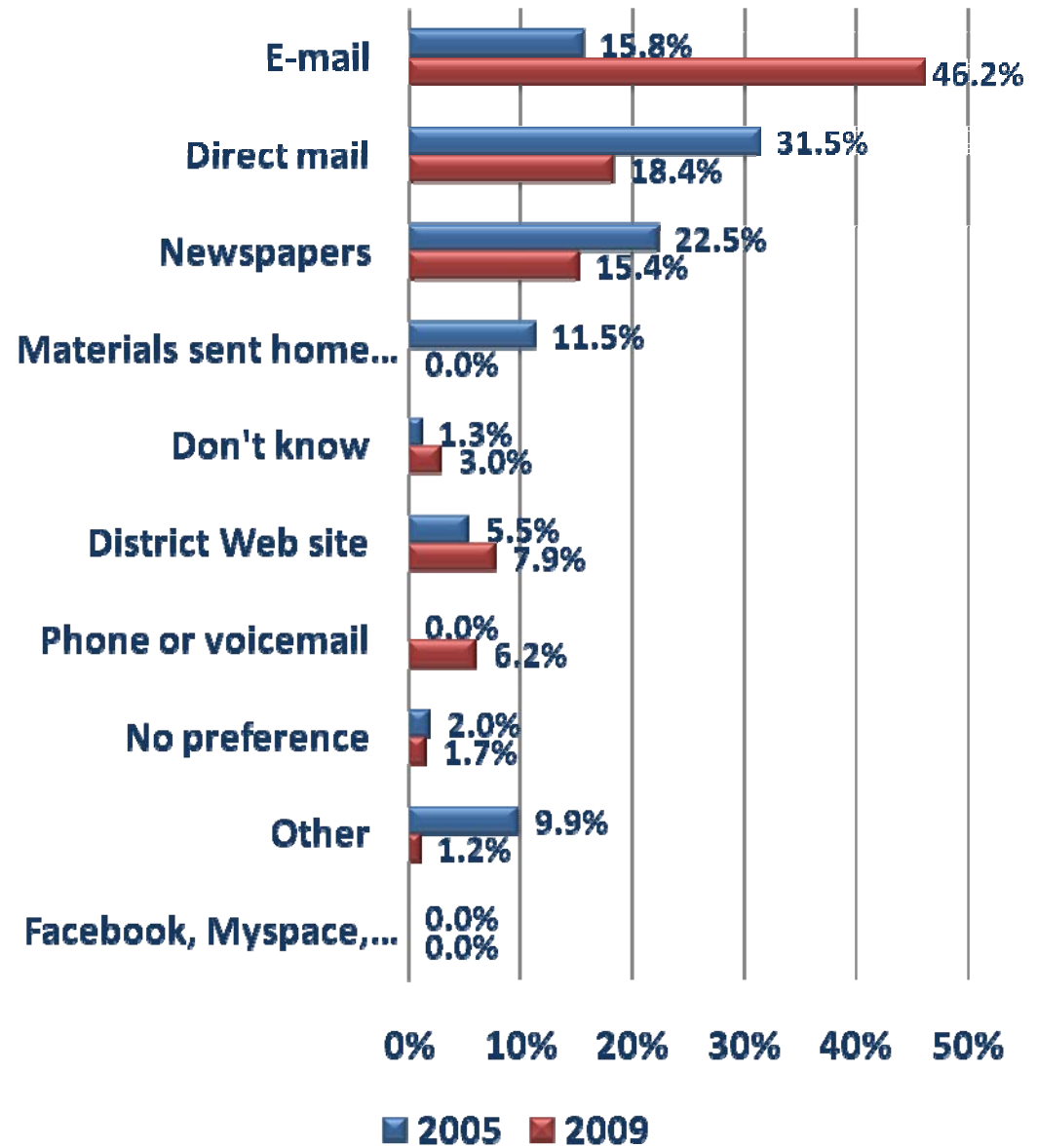
Information

“How do you currently receive information about the Indian Prairie School District?”



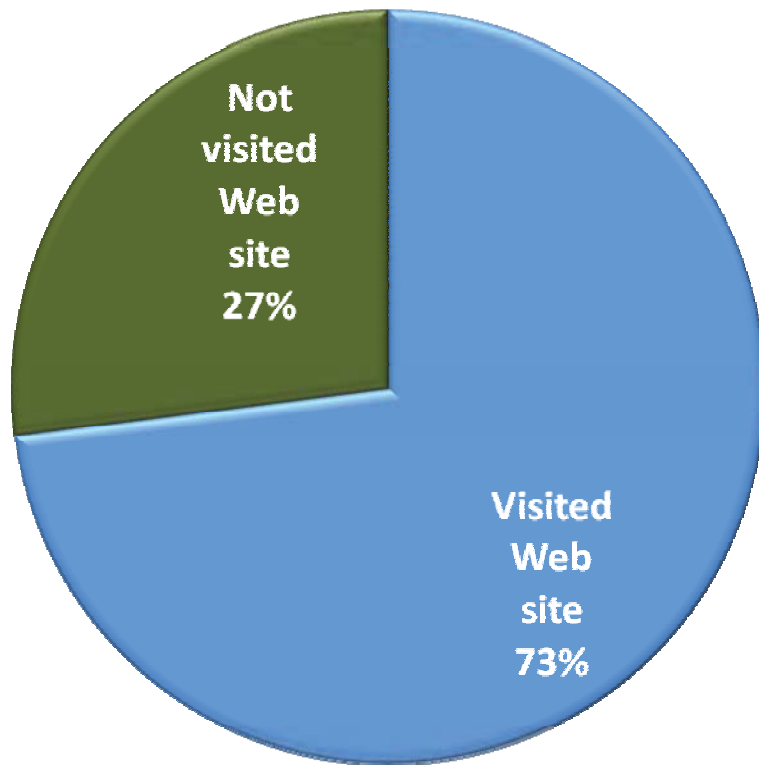
Information

“What is the most effective way for the district to communicate with you in the future?”

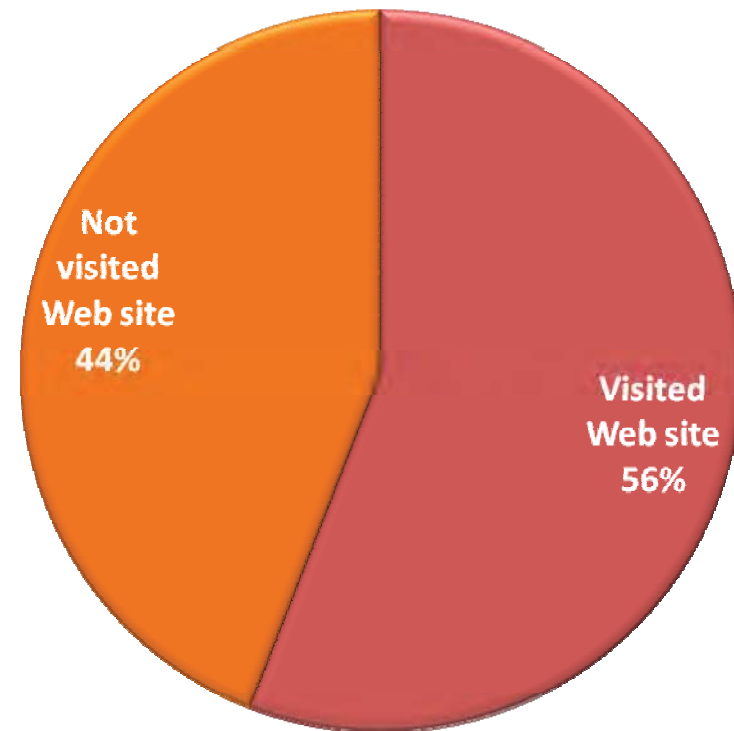


Web site

2009



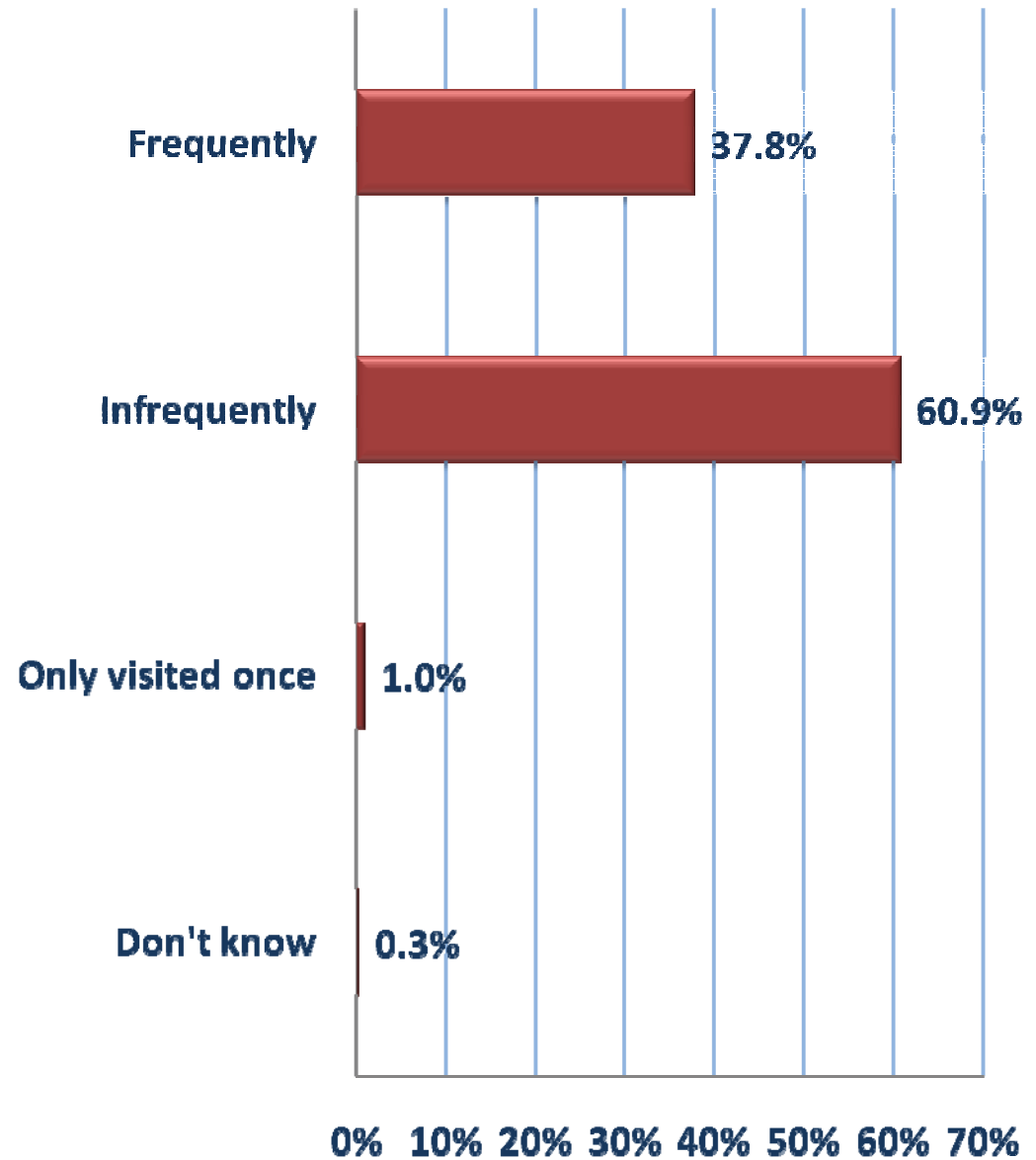
2005



Web site

Those who have visited the district's web site were asked:

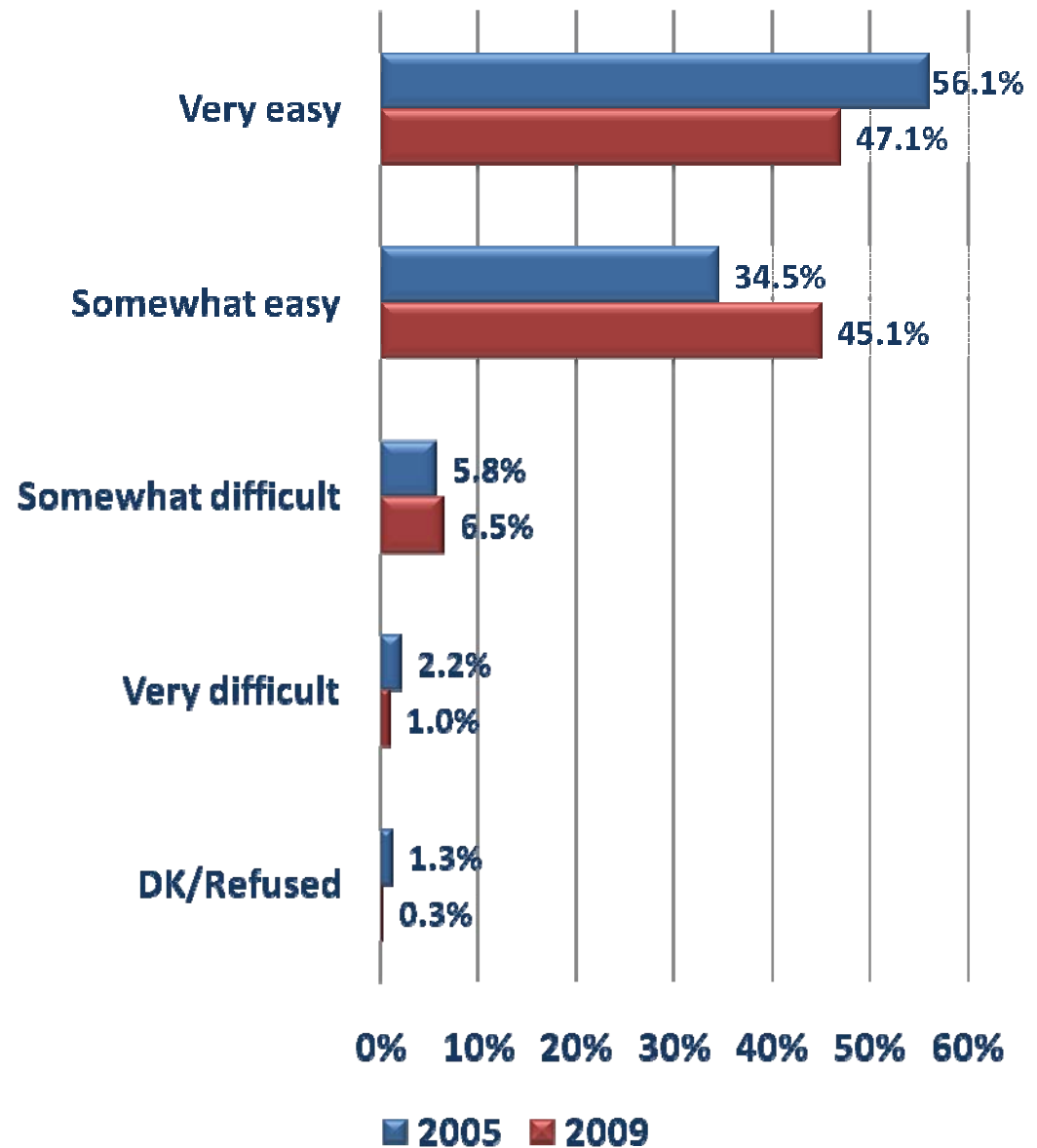
“Do you visit the district's web site frequently or infrequently?”



Web site

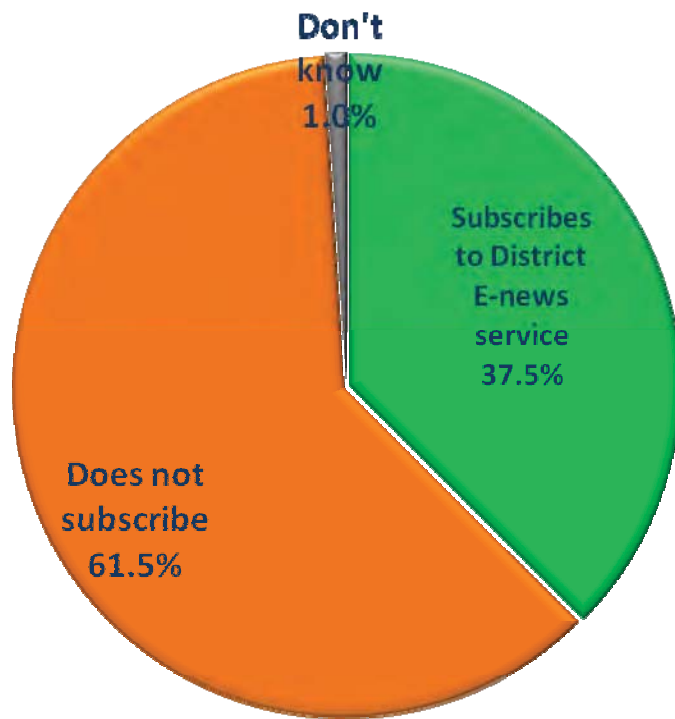
Those who have visited the district's web site were asked:

“Was it very easy, somewhat easy, somewhat difficult or very difficult for you to find the information you needed on the district's Web site?”

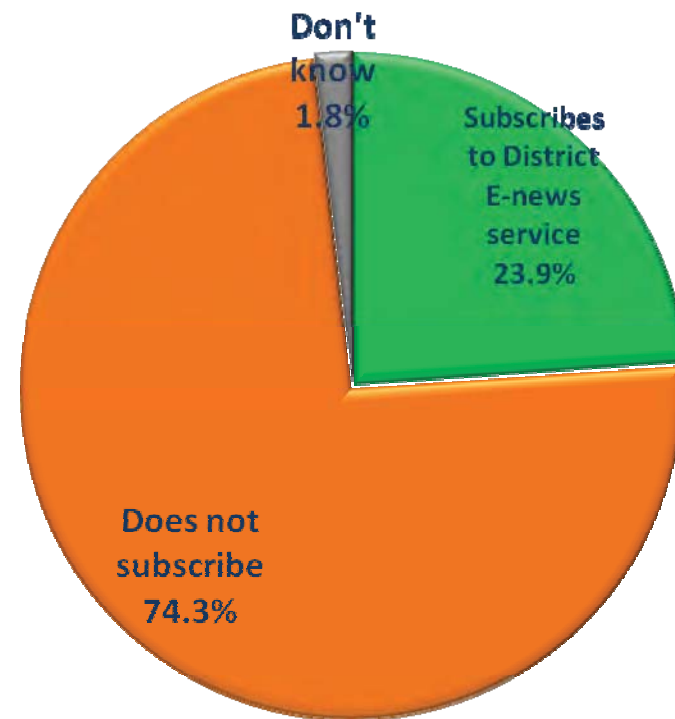


E-news

2009



2005



Additional information

“In which of the following subject areas would you most like to receive additional information about the Indian Prairie School District?”

- 1) The District’s budget and finances
- 2) Enrollment
- 3) Student test scores
- 4) How the district compares to other school districts?”

