



WINTER 2018



# Drawing Classes for Kids

## Young Rembrandts

held at

## May Watts Elementary

### HOW IT WORKS:

We provide all supplies. Classes are held in your school immediately after dismissal. Parents are responsible for prompt pickup when class is finished.

**\*\*PLEASE SEND A NOTE TO CLASSROOM TEACHER\*\***



classes

## Tuesday



tuition

## \$ 80

8 week session.

## Grade K- 5

**50 / 50 payment plan available online!**

## 3:35 PM to 4:35 PM

## 1/9/2018 to 3/13/2018

No Class 1/16, 1/30

### Mailing address:

1042 Maple Ave, Suite 343  
Lisle, IL 60532  
PH 630-493-4263  
FAX 630-390-2338



TO ENROLL ONLINE see details at: [www.youngrembrandts.com/dupage](http://www.youngrembrandts.com/dupage)  
TO ENROLL BY MAIL-FAX PHONE- complete the registration form and MAIL-FAX-PHONE to our YR office...

PARENT Name \_\_\_\_\_ Last \_\_\_\_\_

School May Watts Elementary Start Date 1/9/2018

Mobile \_\_\_\_\_ Home \_\_\_\_\_

Class Day Tuesday Class Time 3:35 PM

Home Address \_\_\_\_\_

**\*\*PLEASE SEND A NOTE TO YOUR CHILDS CLASSROOM TEACHER\*\***

City \_\_\_\_\_ State \_\_\_\_\_ Zip \_\_\_\_\_

Make checks payable to Young Rembrandts - include child's name and school.

Email \_\_\_\_\_

We accept MasterCard - Visa - Discover PHONE & FAX orders are Accepted

STUDENT Name \_\_\_\_\_ Last \_\_\_\_\_

May we photograph/video your child in class? Yes No

Grade \_\_\_\_\_ Teacher \_\_\_\_\_

Are you interested in being a parent volunteer? Yes

My child will: be picked up other \_\_\_\_\_

Visa MasterCard Discover

### Other Emergency Contact

Card # \_\_\_\_\_ / \_\_\_\_\_ / \_\_\_\_\_ / \_\_\_\_\_

First Name \_\_\_\_\_ Last \_\_\_\_\_

CCV \_\_\_\_\_ Expiration \_\_\_\_\_ Charge my account in FULL

Phone \_\_\_\_\_ Relationship \_\_\_\_\_

*I understand all personal absences are forfeited* Charge my account 2 payments

Initial \_\_\_\_\_

\*Distribution of information and materials through the school district does not imply District 204 endorsement\*

**REGISTRATION is available for the WINTER session!**

The next session of **Drawing Classes** will begin soon after the Holidays!

We enjoy working with your child and look forward to seeing them in the classes.

ENROLL ONLINE at our web address for the next session of **Young Rembrandts**.

[www.youngrembrandts.com/dupage](http://www.youngrembrandts.com/dupage) or [www.youngrembrandts.com/foxvalley](http://www.youngrembrandts.com/foxvalley)

**All new lessons every class** - here are some samples of what's coming up in the weeks ahead!

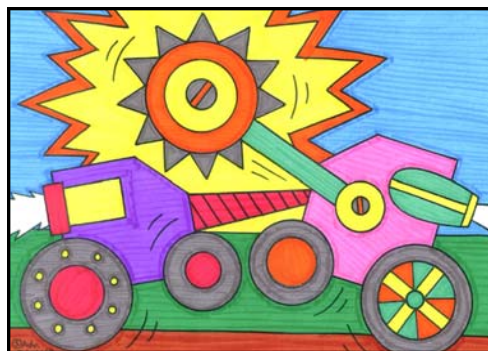


## Young Rembrandts Lesson Summary



### UNICORN

Draw a unicorn, a fantastic, fictional animal. It resembles a horse, but has a pointed horn on its forehead. Our composition features a mane of layers of long, wavy hair. Stripes added to its horn and a colorful pattern background



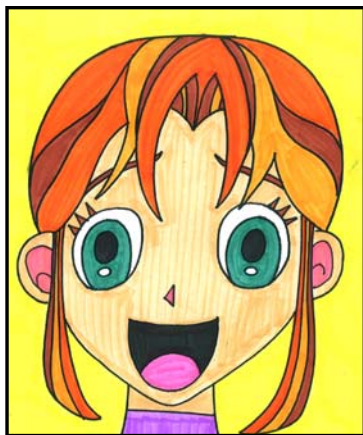
### ROBOTS/BATTLEBOTS

Dueling robots, widely known as "battlebots." Inspired popular robotic machines equipped with a pointed drill bit, a circular saw, and rocket engines. customized for exciting, friendly competition



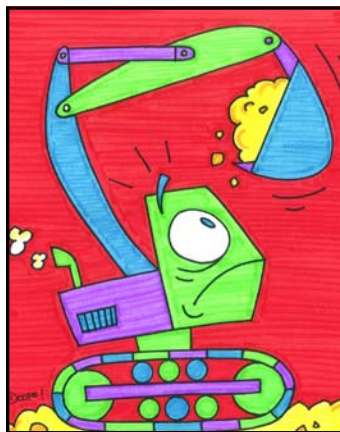
### SOCCER PLAYER

Explore figure drawing as we draw an athletic soccer player. We create dynamic poses in this action-filled scene. Our character dressed in a colorful soccer jersey and cleats. Colored pencils allow us to shade our character and scene.



### ANIME EXPRESSIONS

Influenced by anime, the Japanese style of animation. Anime is very stylized and characters are very exaggerated. We draw facial expressions with dynamic characters utilizing this popular art style.



### EARTH MOVERS

Construction vehicles fully realized as cartoon characters. The addition of facial expressions, emotions, and dynamic poses bring objects to life. These detailed vehicles still retain their defining characteristics.



### SNOWMEN IN ACTION

Learn how to personify our snowmen, making them act like people. Clothing, props, and a sense of movement bring characters to life. Colorful patterns and interesting scenes make our drawings very memorable.

Your child will learn these skills and techniques during Young Rembrandts' classes. Each week your child draws new images, learns new vocabulary and has fun discovering art and the Power of Drawing!

Young Rembrandts 1042 Maple Ave Suite 343 Lisle IL 60532

phone 630-493-4263