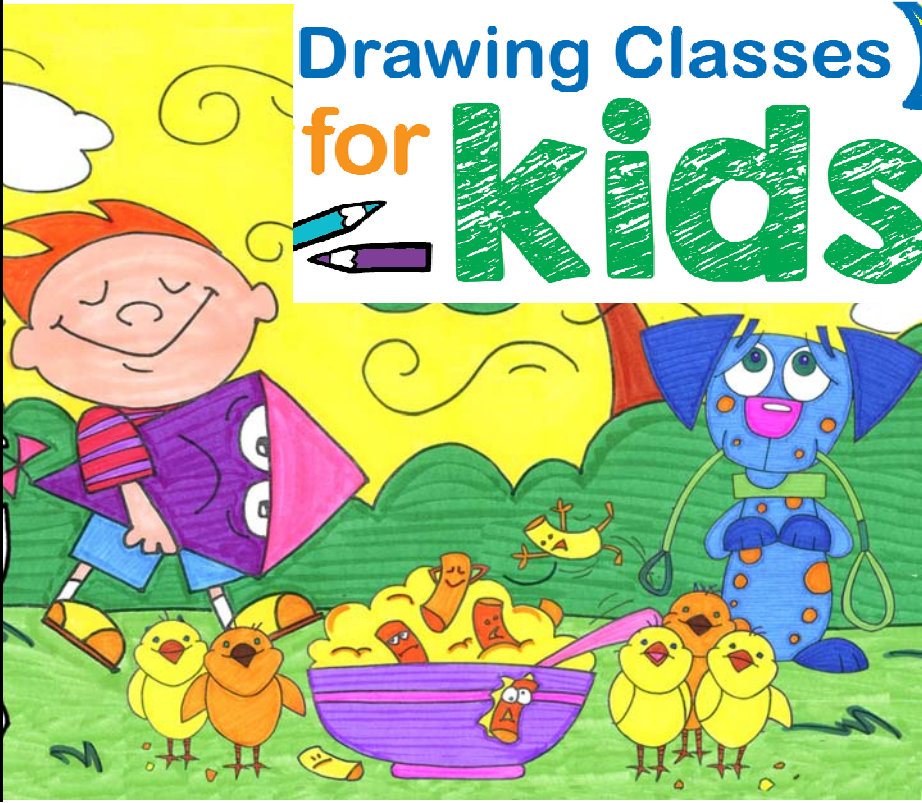




SPRING 2017



# Young Rembrandts

held at  
**Clow Elementary School**

### HOW IT WORKS:

We provide all supplies. Classes are held in your school immediately after dismissal. Parents are responsible for prompt pickup when class is finished.

**\*\*PLEASE SEND A NOTE TO CLASSROOM TEACHER\*\***



**Wednesday**



**\$ 50**

**Mailing address:**  
1042 Maple Ave, Suite 343  
Lisle, IL 60532  
PH 630-493-4263  
FAX 630-390-2338

3:35 PM to 4:35 PM  
4/5/2017 to 5/24/2017  
No Class 4/19, 5/3, 5/17

5 week session.  
Grade K- 5  
**50 / 50 payment plan available online!**



TO ENROLL ONLINE see details at: [www.youngrembrandts.com/dupage](http://www.youngrembrandts.com/dupage)  
TO ENROLL BY MAIL-FAX PHONE- complete the registration form and MAIL-FAX-PHONE to our YR office...

PARENT Name \_\_\_\_\_ Last \_\_\_\_\_

School Clow Elementary School Start Date 4/5/2017

Mobile \_\_\_\_\_ Home \_\_\_\_\_

Class Day Wednesday Class Time 3:35 PM

Home Address \_\_\_\_\_

**\*\*PLEASE SEND A NOTE TO YOUR CHILDS CLASSROOM TEACHER\*\***

City \_\_\_\_\_ State \_\_\_\_\_ Zip \_\_\_\_\_

Make checks payable to Young Rembrandts - include child's name and school.

Email \_\_\_\_\_

We accept MasterCard - Visa - Discover PHONE & FAX orders are Accepted

STUDENT Name \_\_\_\_\_ Last \_\_\_\_\_

May we photograph/video your child in class? Yes No

Grade \_\_\_\_\_ Teacher \_\_\_\_\_

Are you interested in being a parent volunteer? Yes

My child will: be picked up other \_\_\_\_\_

Visa MasterCard Discover

### Other Emergency Contact

Credit Card \_\_\_\_\_ / \_\_\_\_\_ / \_\_\_\_\_ / \_\_\_\_\_

First Name \_\_\_\_\_ Last \_\_\_\_\_

CCV \_\_\_\_\_ Expiration \_\_\_\_\_ Charge my account in FULL

Phone \_\_\_\_\_ Relationship \_\_\_\_\_

*I understand all personal absences are forfeited* Charge my account 2 payments

Initial \_\_\_\_\_

\*Distribution of information and materials through the school district does not imply District 204 endorsement\*



**REGISTRATION is available for the SPRING session!**

The next session of **Drawing Classes** will begin after Spring Break!

We enjoy working with your child and look forward to seeing them in the classes.

ENROLL ONLINE at our web address for the next session of **Young Rembrandts**.

[www.youngrembrandts.com/dupage](http://www.youngrembrandts.com/dupage) or [www.youngrembrandts.com/foxvalley](http://www.youngrembrandts.com/foxvalley)

**All new lessons every class** - here are some samples of what's coming up in the weeks ahead!

## Young Rembrandts Lesson Summary



### CASTLE GUARD

Inspired by artwork of famous Painter Gustav Klimt. Our drawing is a soldier in a suit of scaled armor and a helmet. Rectangles and scales are some of the patterns that we apply to his clothing.



### FAWN

Draw this wonderful fawn. An outdoor scene features a baby deer nestled in grass, among flowers and bushes. Our fawn has a furry texture. Layers give our illustration depth. Vibrant colors reinforce the spring season.



### WAITING DOGS

It is very challenging, learning how to draw dogs waiting for something. We add props and background elements to give our scenes a sense of story, and humor.



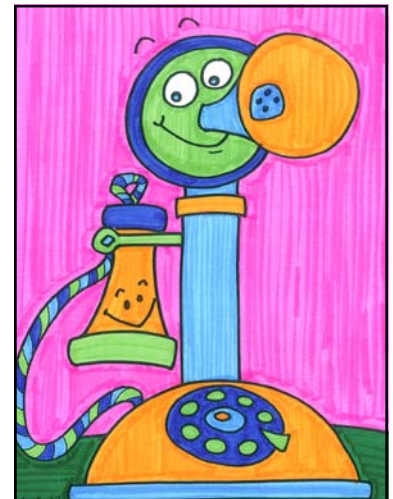
### GRANDMA MOSES

Inspired by the artwork of Grandma Moses. An artist with no formal art training. Well known for landscapes and country living. We create depth and distance with foreground elements and background elements.



### KITE SEQUENCE

A comic strip-inspired sequence. A child flying a kite on a windy day. Learn to convey movement through flowing hair, bending trees, and wind lines. A great lesson to strengthen composition skills and color technique.



### VINTAGE TELEPHONES

Draw various styles of telephones from different times. Learn to personify with exaggerated facial expressions. Bring drawings to life and give our phones personality.

Your child will learn these skills and techniques during Young Rembrandts' classes. Each week your child draws new images, learns new vocabulary and has fun discovering art and the Power of Drawing!

Young Rembrandts 1042 Maple Ave Suite 343 Lisle IL 60532

phone 630-493-4263